

# LC32

POWER 30W

## Laser Printer

### เครื่องเลเซอร์

ยี่วันนี้ ไม่เปลืองหมึกอีกต่อไป **ประหยัดค่าใช้จ่าย**  
ไม่ลอกออก ไม่เลอะสีเหมือนเครื่องยิงแบบใช้หมึก

**TRUE TECH** บริษัท ทรูเทค แมชชีนเนอรี่ จำกัด

288 ถนนบางขุนเทียน-ชายทะเล แขวงแสมดำ เขตบางขุนเทียน กทม. 10150  
Tel. 02-8921588 Fax. 02-8920044 Email. marketing@truetechmachinery.co.th



#### Support printing

number, text, bar code, time, serial number etc



### Main configuration performance parameters of laser machine

Model : LC32  
Laser model : Co2  
Material and color : PET, GLASS

**Speed of line** : the speed is determined by contents, material and process of production

**Requirement of marking** : Support printing the number, text, bar code, time, serial number etc.

**Power 30W** : High quality imported laser module with KML OEM made. It will ensure the effect of the laser marking and the stability of the output of the laser power. It has a good adaptability for materials and production economy than general laser in market.

**Cooling** : Fan cooling

**Control system** : Use KML intellectual property right of Samsung 10 inch embedded Touch Screen control system. It has easy to use graphical interface and has a well-proportioned and pleasing shape. With anti high temperature, anti interference and other characteristics.

**Scanning system** : Use Singapore wavelength optics and Scanlab scanning system. With better transparency stability conversion rate etc.

**Design** : High quality advanced electrostatic spraying process for the control box. And aluminum technology patent profile with IP54 protection class design.

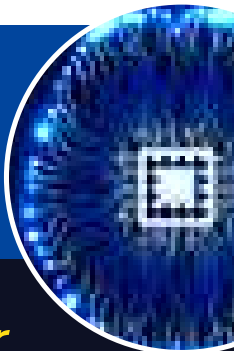
**Support** : Support encoder, photoelectric switch, foot switch etc

**Power supply** : Use industrial level control power supply MEANWELL power supply with anti interference, high reliability and high stability etc

**Language** : Support Chinese and English language operation interface, and support edit with Chinese, English and Russian etc

**Service** : Support the engineer training in KML factory or on the customer's site; Support use email, QQ and Tel communication. Tools with foreign customer's service, and we also support foreign site installation service based on the discussion between the two sides.

**System upgrade** : Support free upgrade for the operation system on line with USB drive!



### The solution of Laser Marking for the paper

#### Laser marking machine application

Model : LC5235  
Laser model : Co2 laser 30W (china) Air cooling  
Line Speed pcs/h : Above 12000  
Material : Paper, PET, wood, PVC (Glass : Line Speed 7000 )

Model number	LC32
Type	Co2 laser printing machine
Laser power	30W
Laser wave length	10.6μm
Marking depth	≤ 0.01MM
Marking speed	≤ 9000mm/s
Marking line width	0.1mm
Min character size	0.1mm
Repeat accuracy	0.01mm
Mainframe	KML independent research and development
Power source	Industry power source
Laser head	sino galvo, motor technologies
Size	1360*520*650
Accessory	a set of tools ,operation manual,fuse
Communication port	USB
Levels of protection	IP45
Environment condition	0-40°C
Weight	60KG
Control software	KML independent research and development
Working life	Lasers in theory for 50 thousand hours